

Amanda Penrose Hart



Acid Free



Snow 2012 oil on paper 25x25cm



# Amanda Penrose Hart

Acid Free

20 years of drawing

10 June – 5 July 2014

King Street Gallery  
on William



*Anzac Cove* 2013 oil on paper 12x17cm



*From the Beach* 2013 oil on paper 10x15cm



*Trenches Gallipoli* 2013 oil on paper 12x17cm



*The Sphinx Gallipoli* [diptych] 2014 oil on paper 22x28cm



*Sofala* [diptych] 2007 watercolour on paper 10x30cm



*Hill End 1* 2006  
gouache & graphite on paper 15x10cm



*Hill End 2* 2006  
gouache & graphite on paper 15x10cm



*Hill End 3* 2006  
gouache & graphite on paper 15x10cm



*Hill End 4* 2006  
gouache & graphite on paper 15x10cm



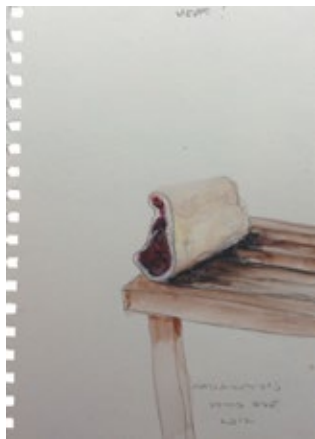
*The Shooter*  
2013 gouache & graphite on paper



*The Dirty Dozen* 2013  
graphite and gouache on paper



*New Year's Day [Central Park]* 2013  
gouache on paper



*Meat* 2013  
graphite & gouache on paper



*Squirrel* 2013  
graphite & ink on paper



*The Swimmer*  
2013 gouache on paper



*Clouds* 2013 oil & graphite on paper 20x16cm



*Wilcannia* 2014 oil on paper 27x34cm



*The Hill* 2013 oil on paper 13x19cm



Wilcannia



Mule Gully



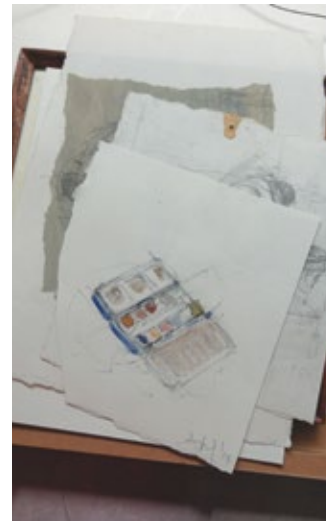
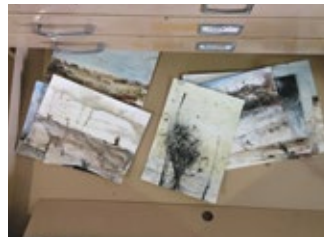
Wilcannia



Ari Burnu



Waiheke Island



Ecabat

In the wind in a dry creek bed, Amanda Penrose Hart plants herself in the sand with three white, pre-primed planks, each a couple of metres wide and only 15 cm or so deep. She positions the boards in parallel, the second serving as the palette for the first. The length of the plank becomes a panoramic width as she deftly works away at blobs of oil with her palette knife, sliding colour and line together to describe the vision in her mind's eye. Jamming in the height is a challenge to her, but she feels that the essence of a landscape is always in the middle band of the traditional rectangle, so by eliminating the fill of the top and bottom, she focuses on what she sees as most important.

In the long lee-time between the field trip itself and an eventual exhibition, the studio component is the last phase for creative refinement. There is a slight stuttering of continuity for some as they take a step back to disaggregate their personal experience from that of the collective, conscious that their finished works will be appraised in a composite show. This studio-bound evaluation is invariably where the layers of imagination and memory creep in to personalize even further the experience of the artists until they are painting the spaces inside their head. Amanda Penrose Hart describes this as capturing the 'thought of a landscape,' rather than trying to depict the overt reality.

James Compton 2012



Larapinta Trail 2009



Arnhemland 1 [diptych] 2007 gouache on paper 10x30cm



*Gallipoli Hills* 2013 oil & graphite on paper 16x21cm



*In the Trenches* 2013 oil & graphite on paper 23x25cm



*Pink Sky, Turkey* [diptych] 2013 oil on paper 14x22cm



*Lamp Post* 2013 oil on paper 12x18cm



*Gallipoli Study* 2013 oil on paper 15x21cm



*Landscape Gopllipoli* [diptych] 2013 oil on paper 14x22cm



*Lemon Hills* 2014  
oil on paper 18x22cm



*Study for Wire Fence* 2014  
oil on paper 18x22cm





*Dry as a Bone, Wilcannia*  
2013 oil on paper 20x27cm



*Green Hills Gallipoli* 2013  
oil on paper 18x22cm



*Poplars* 2013  
oil and ink on paper 15x20cm



*Dam Maneela* 2013 oil on paper 18x20cm



*Holidays* 2009 oil on canvas 55x65cm



*Wilcannia 2* 2013 oil on paper 15x20cm



*Wilcannia* 2013 oil on canvas 25.5x31cm



*Rainy Day, Pittwater 1995*  
gouache & graphite on paper 14x11cm



*Neilson Park 1995*  
graphite & gouache on paper 12x12cm



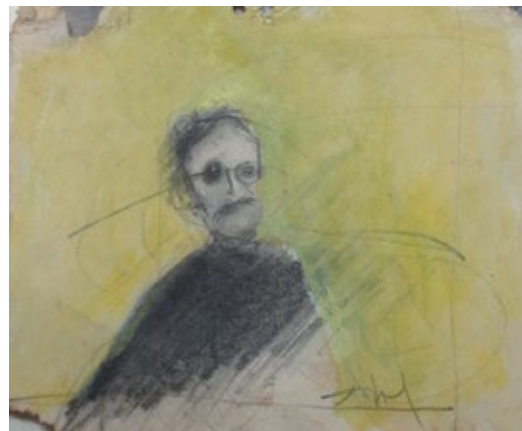
*In Adelaide 1992*  
watercolour & graphite on paper 14x11cm



*Bunnings Me 2006* gouache on paper 10x15cm



*Judy* 2012 graphite on paper 21x21cm



*Robert Hawkins* 2006  
graphite & gouache on paper 12x12cm



*Sofala* 2012 oil on paper 5x7cm



*Nyngan* 2012 oil on paper 5x7cm



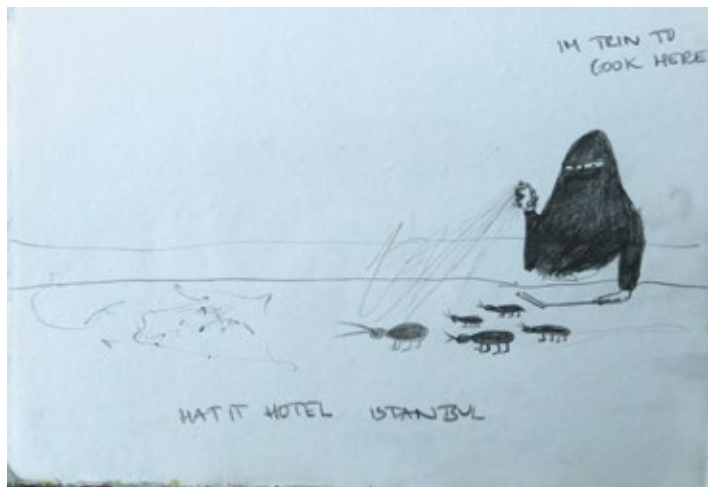
*Power* 2012 oil on paper 5x7cm



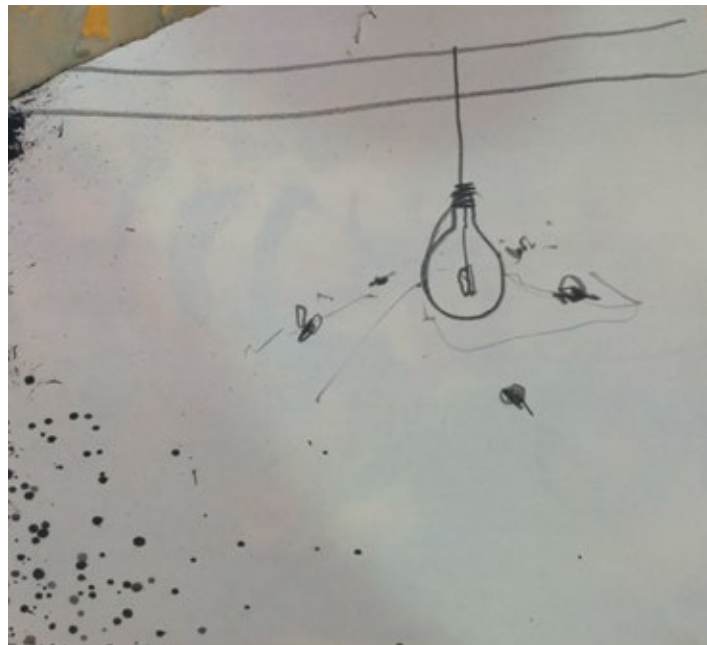
*Syd Sleeping* 2006 watercolour & graphite on paper 9x9cm



*Weird Letterbox* 2014 watercolour & graphite on paper 20x20cm



*I'm tryin' to cook here, Istanbul* 2013 graphite on paper 15x21cm



*No Flies* 2013 graphite on paper 25x25cm



*View from the Nek Gallipoli* 2013 gouache on paper 18x25



*Off the Coast of Turkey* 2013 oil & graphite 14x18cm



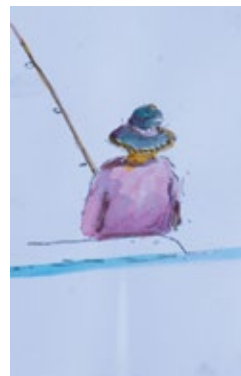
*Goats on the Hill* 2013 watercolour & graphite 14x18cm



*Peter* 2011 oil on paper 15x20cm



*The Red Scarf* 2014 oil on paper 25x18cm



*EC Fishing* 2014  
gouache on paper 15x10cm



*The Darling River* 2013 oil on paper 18x25cm



*Village in Turkey* 2013 mixed media on paper 14x18cm



*From the Trenches* 2013 oil & charcoal on paper 27x34cm



*Sofala after the Rain* 2013 oil & graphite on paper 20x18cm



*Winter Day Gallipoli* 2013 oil and charcoal on paper 27x34cm



*Pink Beach Gallipoli* 2014 oil on paper 27x34cm



*Gallipoli Study* 2013 oil ink on paper 14x18cm



*The Pit* 2013 oil on paper 14x18cm



*Gallipoli* [diptych] 2013 oil& ink on paper 15x30cm



*16 Footer* 2014 acrylic on paper 25x25cm



*Blue Van* 2014 acrylic on paper 18x22cm



*View from the deck Waiheke NZ* 2014 acrylic on paper 32x52cm



*Night View Waiheke NZ* 2014 acrylic on paper 32x52cm



In the Wind Ari Burnu

# Amanda Penrose Hart Acid Free



Full CV on [www.kingstreetgallery.com.au](http://www.kingstreetgallery.com.au)

## **Acknowledgments**

Photography: Michael Bradfield, Robert Linnegar

Text: James Compton

Design: Sam Woods



## King Street Gallery on William

10am – 6pm Tuesday – Saturday

177 William St Darlinghurst NSW 2010 Australia

T: 61 2 9360 9727 [kingst@kingstreetgallery.com.au](mailto:kingst@kingstreetgallery.com.au)

[www.kingstreetgallery.com.au](http://www.kingstreetgallery.com.au)

Directors: Robert Linnegar and Randi Linnegar



Member of the Australian Commercial Galleries Association

Registered Valuer with the Australian Government Taxations Incentives for the Arts Scheme

Published by King Street Studios P/L 2014

ISBN: 978-0-9875540-2-4